

Guideline for glaucoma medications

Flowchart 1 choosing first choice monotherapy

First choice monotherapy			
Timolol 0.5% (E n)	Latanoprost 0.005% (E n)	Brimonidine 0.2% (E n)	Dorzolamide 2% (E n)
Contraindications/relative contraindications			
<ul style="list-style-type: none"> - COPD, asthma - Symptomatic heart block, bradycardia 	<ul style="list-style-type: none"> - Active cystoid macular edema - Active anterior uveitis, herpes keratitis 	<ul style="list-style-type: none"> - Concurrent MAO inhibitor, TCA use - Infants < 2 years old 	<ul style="list-style-type: none"> - Sulfa allergy

Patient factors	Drug properties
<ul style="list-style-type: none"> - Patient characteristics - Safety: systemic, ocular - Adherence - Quality of life - Life expectancy - Additional risk factors 	<ul style="list-style-type: none"> - Efficacy - Target IOP - Glaucoma staging - Preserved/unpreserved - Cost

Staging	Target IOP (mmHg)	% Reduction from baseline
Suspect	24	at least 20%
Early	High teens (18-20)	at least 25%
Moderate	Mid teens (14-16)	at least 30%
Advanced	Low teens (10-12)	at least 30%

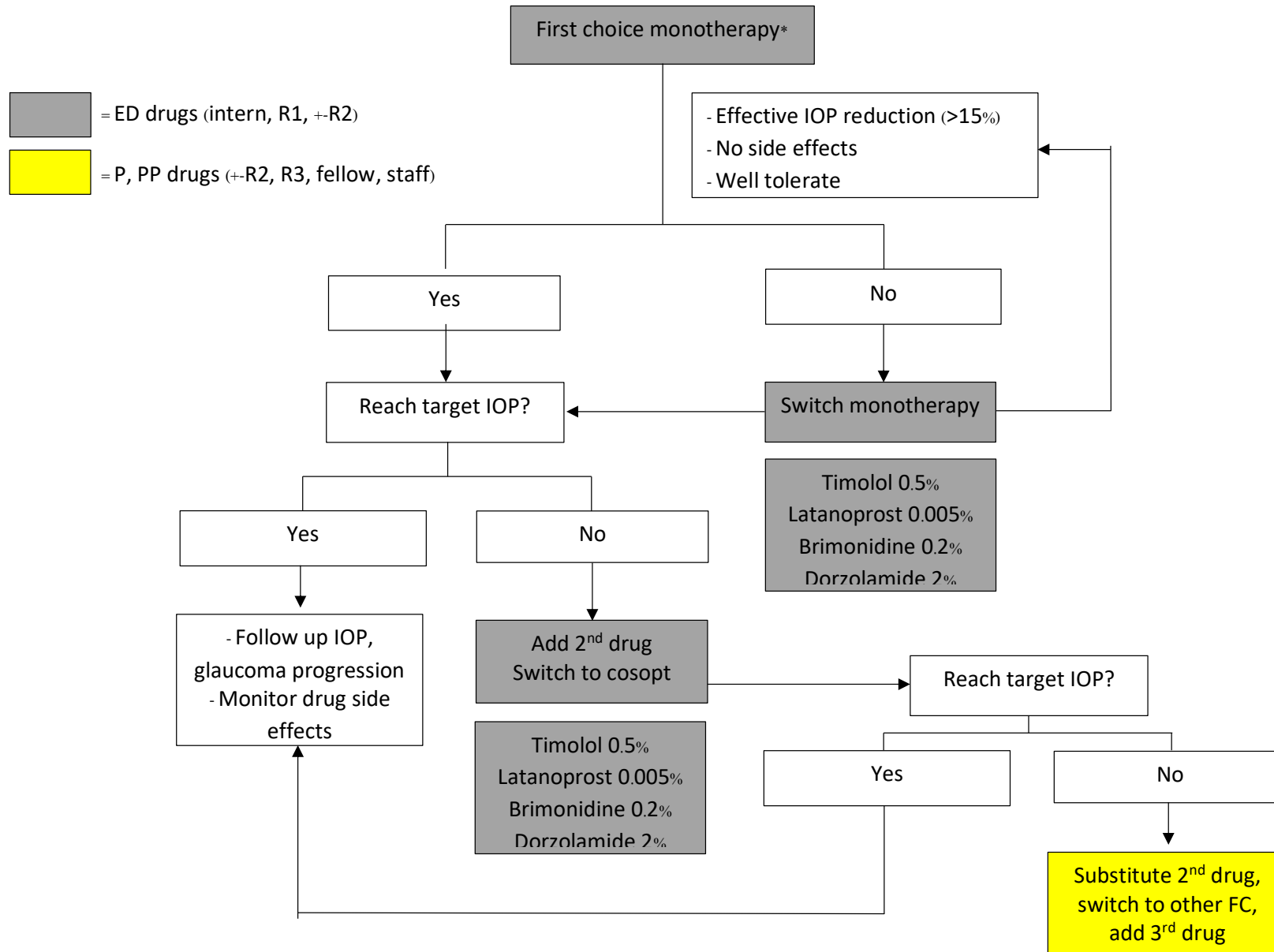
COPD = chronic obstructive pulmonary disease

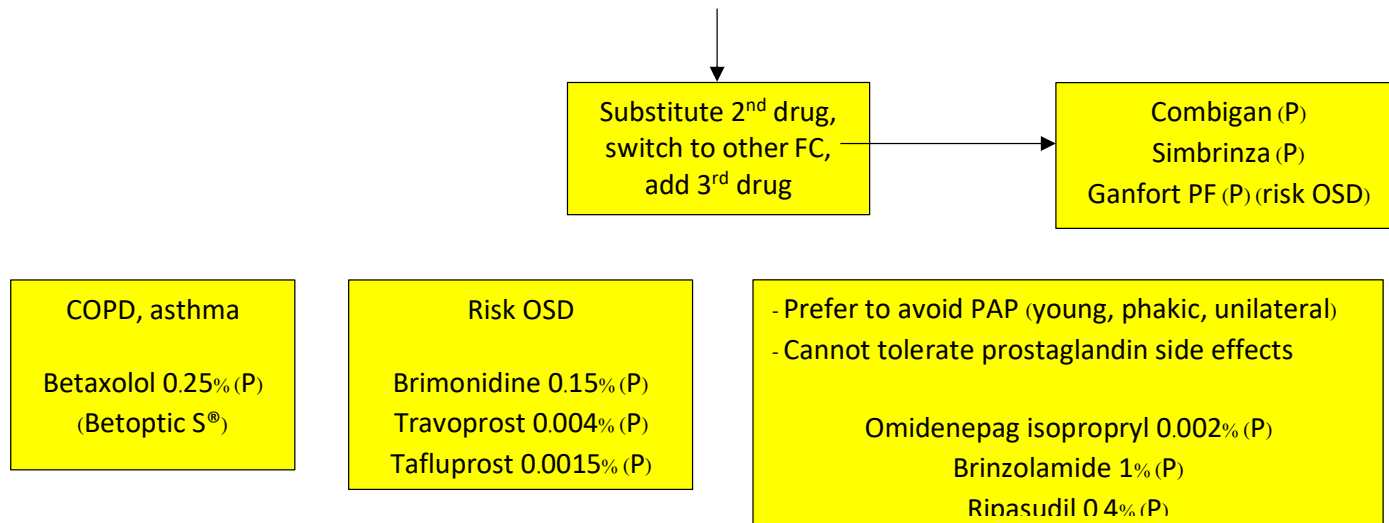
MAO = monoamine oxidases

TCA = tricyclic antidepressants

IOP = intraocular pressure

Flowchart 2 adding and switching





FC = fixed combination drugs

PF = preservative-free

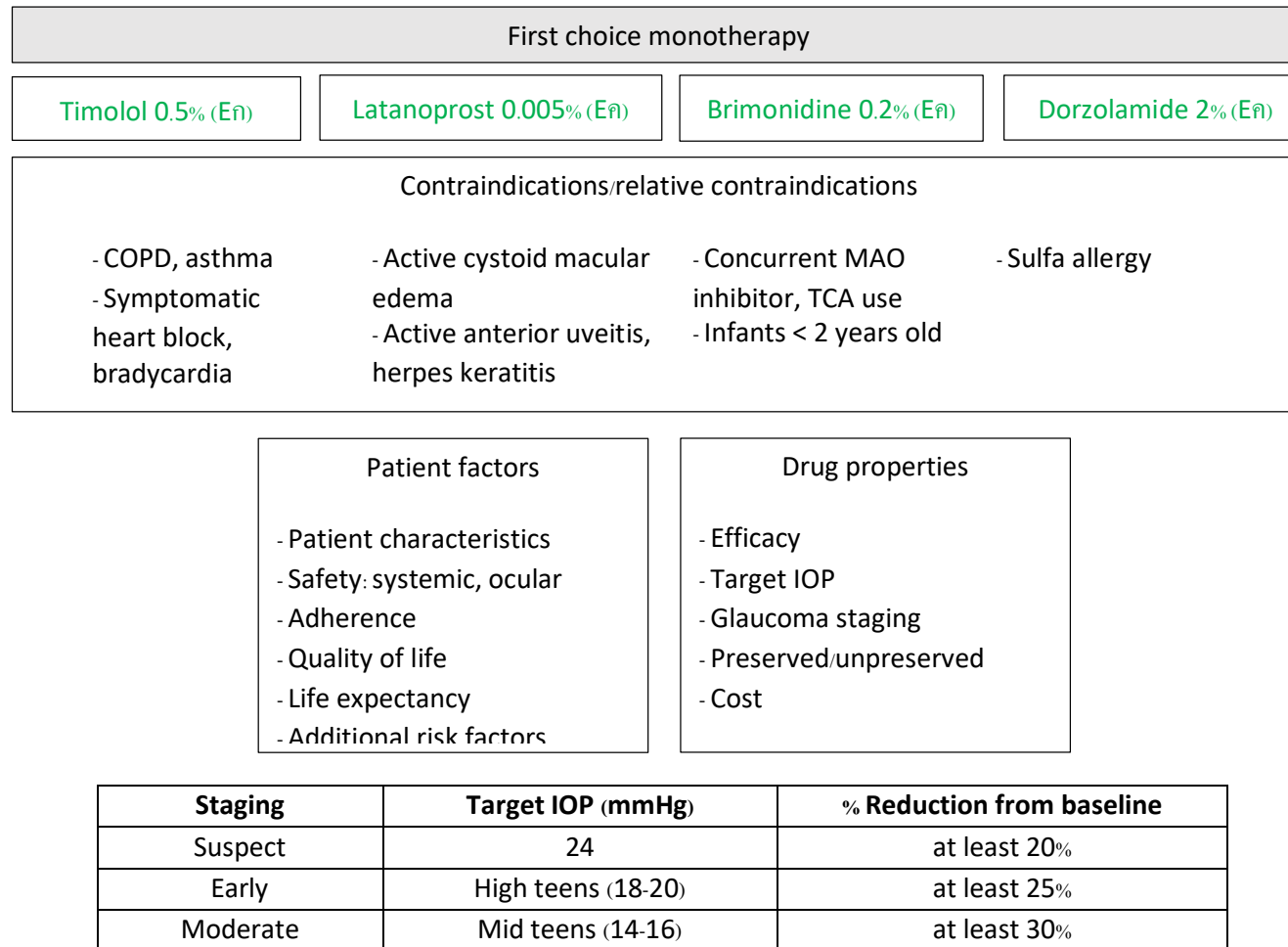
OSD = ocular surface disease

PAP = prostaglandin-associated periorbitopathy

* กรณี advanced glaucoma หรือ initial IOP สูง อาจพิจารณาเริ่มยาตั้งแต่ 2 ชนิดขึ้นไปเพื่อควบคุมความดันตา

Guideline for glaucoma medications

Flowchart 1 choosing first choice monotherapy



Advanced	Low teens (10-12)	at least 30%
----------	-------------------	--------------

COPD = chronic obstructive pulmonary disease

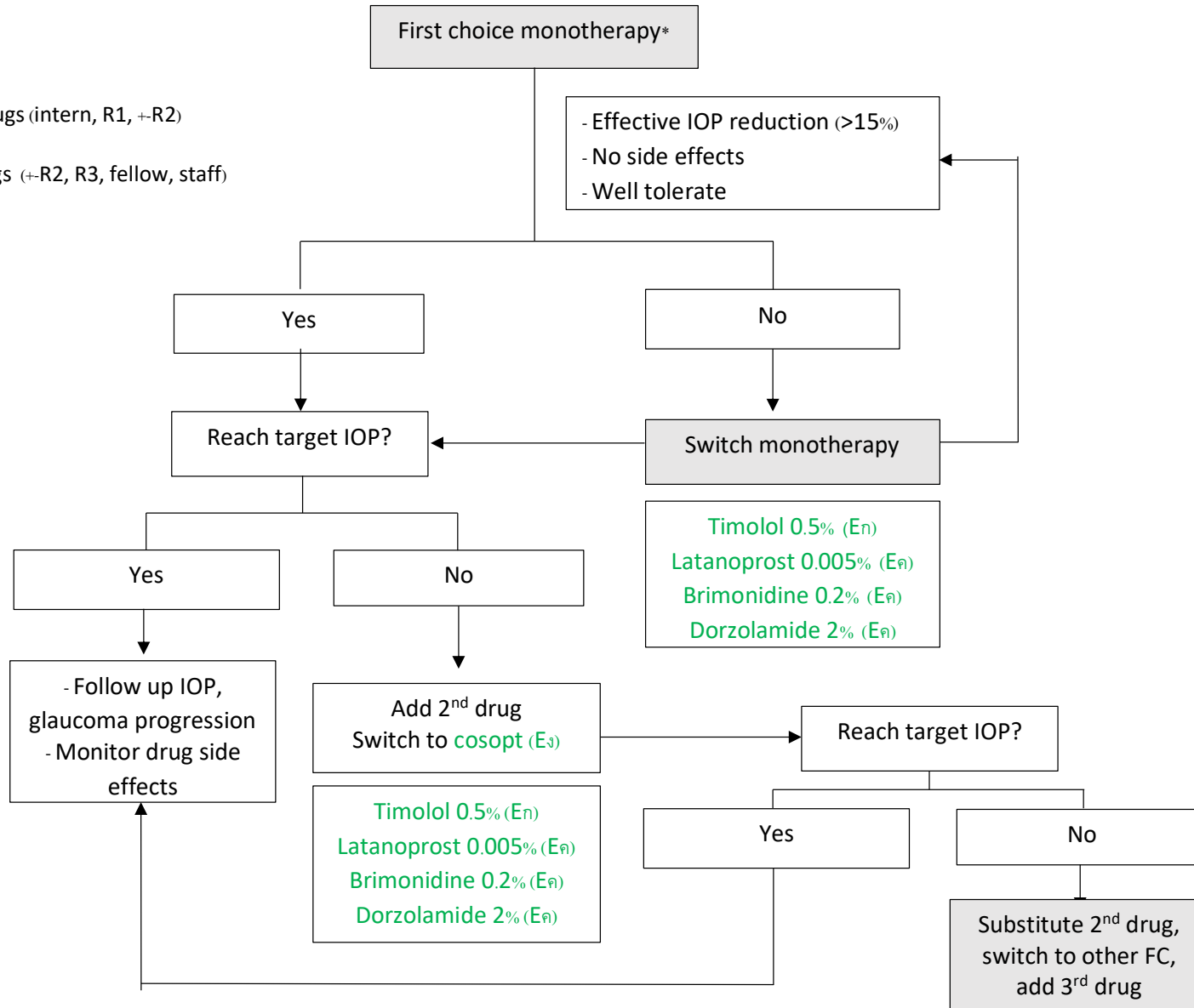
MAO = monoamine oxidases

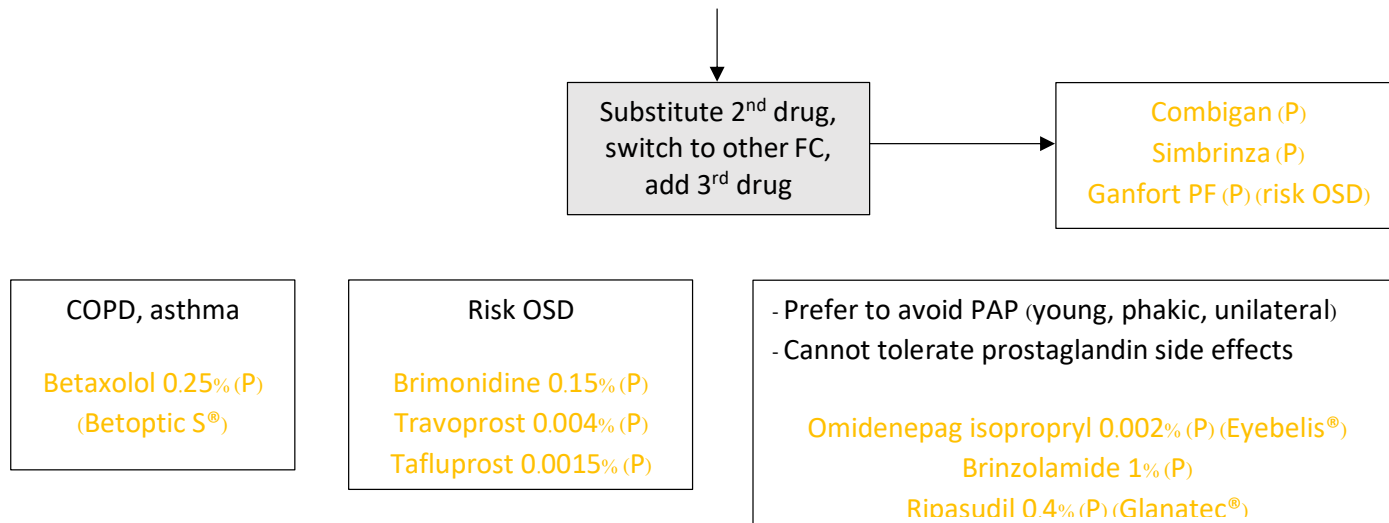
TCA = tricyclic antidepressants

IOP = intraocular pressure

Flowchart 2 adding and switching

- = ED drugs (intern, R1, +-R2)
 = P drugs (+R2, R3, fellow, staff)





FC = fixed combination drugs

PF = preservative-free

OSD = ocular surface disease

PAP = prostaglandin-associated periorbitopathy

* กรณี advanced glaucoma หรือ initial IOP สูง อาจพิจารณาเริ่มยาตั้งแต่ 2 ชนิดขึ้นไปได้เพื่อควบคุมความดันตา